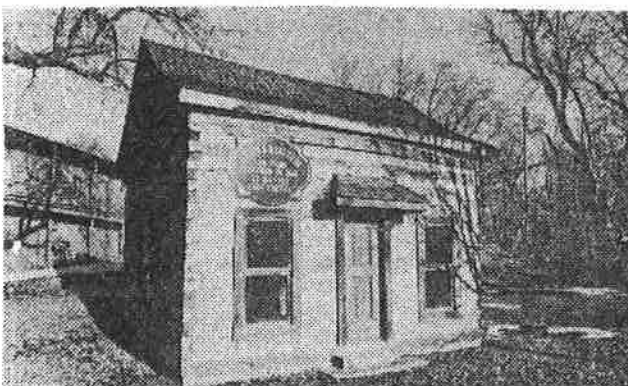
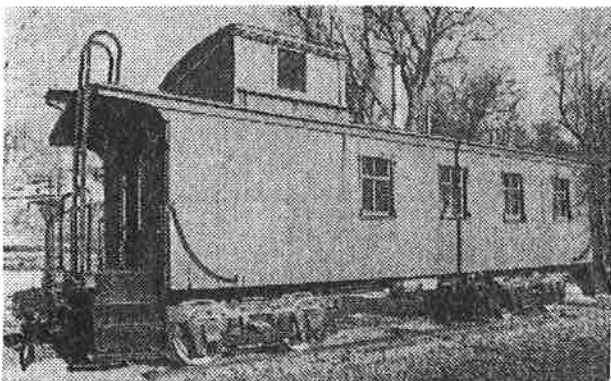


Rock Bluffs School, 1870  
Drawing by Marilyn Wolf



Joseph and Mary Cook Log Cabin, 1868



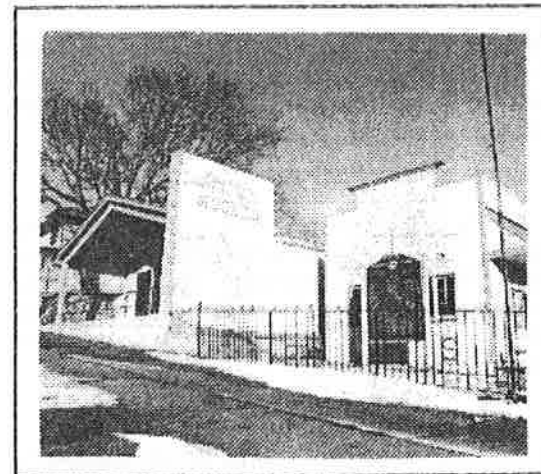
Burlington Northern Caboose, 1913

*Brochure produced in part by a grant from the  
Cass County Visitors Promotion Committee*

Cass County Historical Society  
646 Main Street  
Plattsmouth, Nebraska 68048

## Cass County Historical Society Museum

646 Main Street  
Plattsmouth, Nebraska 68048  
402-296-4770



Dedicated to the mission of telling the history  
of Cass County since 1854, the year  
the county was opened for settlement

### **Museum hours:**

#### **April through October:**

Tuesday through Sunday: 12:00 to 4:00 PM  
Closed Mondays & major holidays.

#### **November through March:**

Tuesday through Saturday: 12:00 to 4:00 PM  
Closed Sundays, Mondays & major holidays.

**Admission free; donations accepted**

**Cass County Historical Society**, was organized in 1936. The Society's first permanent displays were housed in two rooms on the third floor of the Cass County Courthouse. In 1960, the present museum was opened at 646 Main Street in Plattsmouth. Additions to the building were made in 1972, 1981, and 1986.

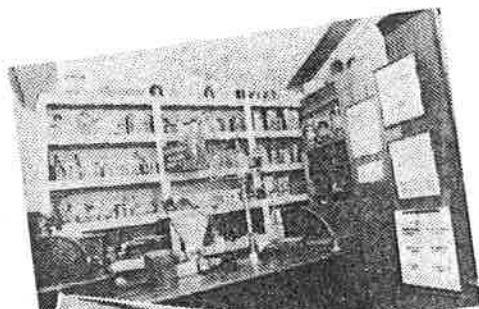
In the main building, permanent exhibits tell the story of the county's roots as part of the westward movement. Included are a general store, pioneer kitchen and Victorian parlor.

The Davis Conference room is the gathering place for meetings and activities such as the "brown bag lunch programs" developed by the museum. Exhibits in the Conference room are changed quarterly and supplement the permanent displays.

The Society also maintains three separate structures. At the end of historic Main Street in Plattsmouth are **The Joseph and Mary Cook Log Cabin**, originally built in Mynard in 1868, and a **Burlington Caboose**, built in 1913. Southeast of Plattsmouth is **Rock Bluffs School**, a one-room brick schoolhouse constructed in 1870.

A genealogy library is maintained by the society and is used extensively by researchers. A traveling trunk of artifacts relating to county history is available to area schools.

You can help the museum continue to collect, preserve and interpret the history of Cass County, Nebraska.



Photographs by Kevin Larson

## Please.....Join us!!

Approximately one-third of the museum's budget comes from annual memberships. Another one-third comes from the county and the rest is from donations, gift shop sales and grants.

**An annual membership in the Cass County Historical Society helps to provide general operating expenses plus funding to:**

**preserve the collection,  
maintain a genealogy research library,  
continue to provide special exhibitions  
and programs such as the "brown bag  
lunch" series**

Cass County Historical Society Museum is a not-for-profit corporation. Contributions are tax deductible since the value of benefits received is minimal.

\*\*\*\*\*

*Please indicate the level at which you'd like to join and return the form along with your check to the museum:*

_____ Patron	(\$1,000 and up)
_____ Benefactor	(\$500 and up)
_____ Investor	(\$250)
_____ Century	(\$100)
_____ Promoter	(\$50)
_____ Booster	(\$30)
_____ Friend	(\$15)

Name \_\_\_\_\_

Address \_\_\_\_\_

City, State \_\_\_\_\_

Zip \_\_\_\_\_

Phone # and e-mail \_\_\_\_\_

check here if you are interested in volunteering.